

CRAIG COETAN

Kr-eye-g Coy-tan Crag of the Cromlech (quoit)
OS Grid Ref: 724 282
WEST FACING



Lower Tier



It was my first climbing visit to Pembroke - a sunny weekend with the Cardiff University Club, sleeping on the beach at Whitesands. We had no real idea where the routes were and, arriving under Craig Coetan, I set off left, up a lovely looking groove. Everything sparkled: the sea, the rock, our mood - Must have been an Act of God.

MARTIN CROCKER

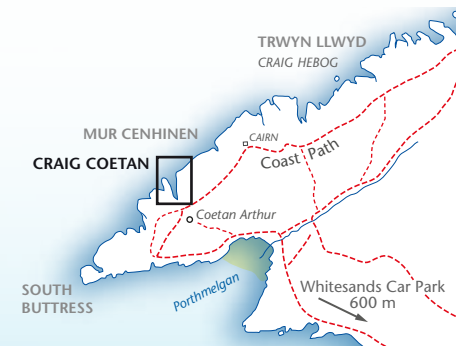
Livi Colson taking a leap of faith on Act of God, VS, while Clare Richardson prays for victory...

EMMA ALSFORD

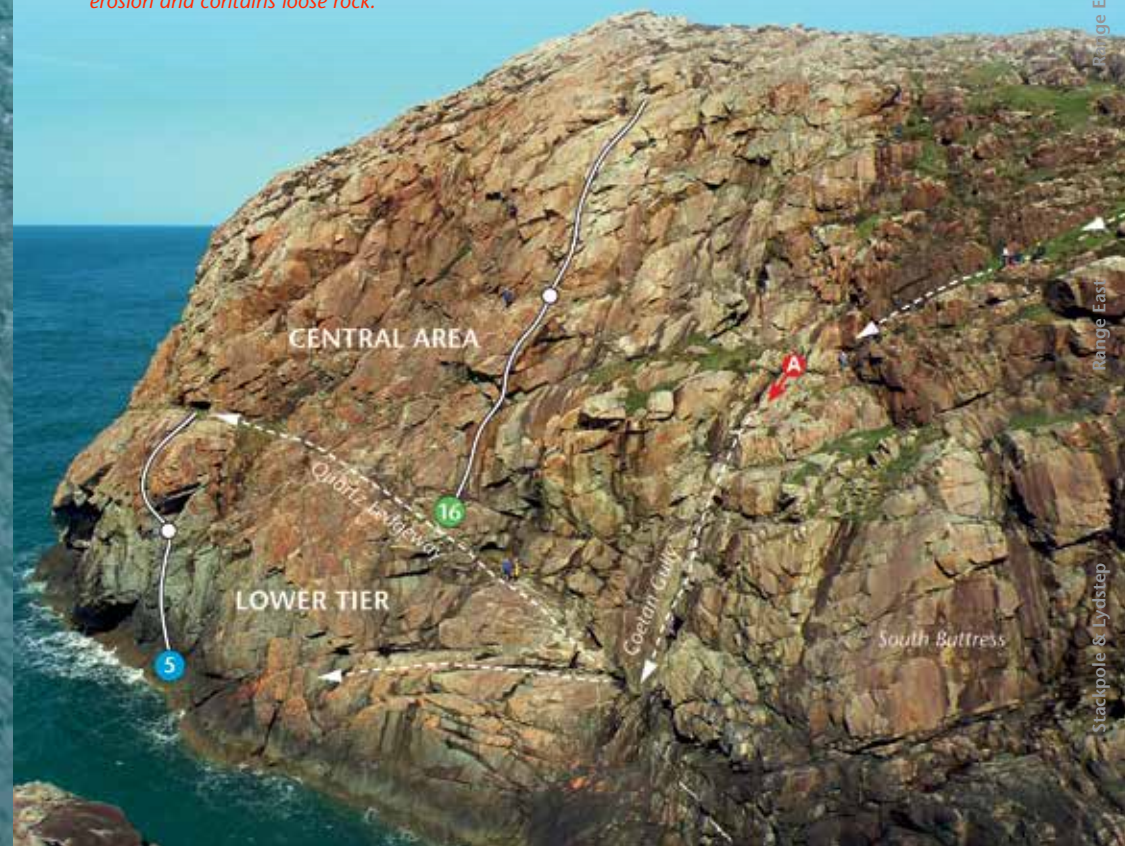
Approach: This crag is next to the ancient burial chamber Coetan Arthur, visible on the skyline from afar as a slanting slab of rock resting on another. Follow the Coast Path north from Whitesands, past Porthmelgan beach and after another 200 metres follow a steep path up right, skirting a marshy area on the left, to continue past Coetan Arthur, and the coastal path, to reach a grassy gully leading down to the top of *Coetan Gully*. **Map p.27.**

A good view is possible from the rocky spur just across the zawn to the west of the crag. The 'Quartz Ledge' is 10 – 15 metres above the sea and the obvious, slanting overhang of *Act of God* is on the far left side, below a grassy ledge. The Lower Tier lies under the 'Quartz Ledge' and the Central Area above it is bounded on the right by the dark groove of *Coetan Gully*.

Please be careful when descending the upper part of the gully as it is vulnerable to erosion and contains loose rock.



Descent: Abseil down *Coetan Gully* to the end of the 'Quartz Ledge' which gives easy access to most of the routes (good nuts in a horizontal crack in the brown rock next to a short path). It is possible to climb down *Zig-Zag* (VD in descent) or via slabs and ledges just left of *Coetan Gully* (also VD in descent) but these are quite exposed.



Pembroke North

Range West

Range East

Range East

Stacropole & Lydstap

LOWER TIER

This section is at the lower left side of the crag, reached by following the 'Quartz Ledgeway' left and then down diagonally seaward to ledges, which gradually peter out into barnacle-covered slabs at low tide. The routes finish at the far end of the 'Quartz Ledgeway', from where it is possible to walk back across to the central area or continue to the top via *Corridor*, *Zig-Zag*, or others.

The first route is approached via a traverse from the seaward face of *Mur Cenhinien*, or by abseiling over the large overhangs from natural anchors 12 metres left of the grassy ledge above *Act of God*.

- 1 **Scary Spider 20m E1 5b S3 F6a** ★
Start at a good crack on the lower right side of the slab below the big roofs. Climb rightwards and up through a small roof, continuing up to climb rightwards past a second roof. Finish up right on the grassy ledge above *Act of God*.
T Luddington 11.8.10
- 2 **Cragmonsters 25m E2 5b** ★
Start down and left of *Act of God* and climb up to the bottom of the groove, following it leftwards past an old peg near the top.
S Quinton, B Williams 3.9.89
- 3 **Summer Holiday 25m E1 5b** ★
Well-protected and enjoyable climbing. Start 3 metres right of *Cragmonsters* and go up a black wall to pull over a bulge and gain a ramp. Follow this up right to a junction with *Act of God*.
S Quinton, J Godfrey, R Keeling 8.9.95
- 4 **Magic Wall 25m E2 5c** ★
From a hanging belay just right of *Summer Holiday*, climb the groove and bulging wall to a leftwards move onto the ramp. Finish left via a hanging groove in a superb position.
S Quinton, R Neath 25.7.12

- 5 **Act of God 30m VS 4c** ★★
Splendid climbing with big holds always appearing at the right moment. Start at the left end of a narrow ledge.
1 18m 4b Traverse left past a groove onto the slab on its left. Follow a shallow groove and a steep wall, trending left to gain a ledge beneath the sloping overhang.
2 15m 4c Move left onto the exposed, undercut slab on the left side of the overhang and continue straight up on good holds to reach the large grass ledge.
M Crocker, G Traish 15.3.75
2a 13m 5a A variation finish moves up right to pull through the overhang just right of centre.
S Quinton, R Hughes 24.1.09
- 6 **Integrity 25m S 4a** ★
Start as for *Act of God* and traverse left to a groove, going past a bulge at 5 metres. Move left and climb up to the left of a jutting rock spike. Finish up cracks and walls to the right of the sloping overhang.
J Harwood, G Evans 14.4.74
- 7 **Wall Climb 20m VD** ★
Start at the pinnacle beneath the centre of the lower tier. Climb leftwards up the steep slab to its apex, moving right to pull onto the slab above.
C Mortlock, C Baker 1968
- 8 **LBJ 20m VS 4c** ★
Climb the shallow groove directly above the pinnacle, passing an overlap at half height.
R Teale, G Rowles, N Jago 29.6.69
- 9 **Stroll On 20m VD** ★
Start 3 metres right of the pinnacle, near a small overhang. Use a flake-line to pass the overhang on the left, and gain a ledge above. Step left to finish up a thin groove.
M Harber (S) 12.4.81

CENTRAL AREA

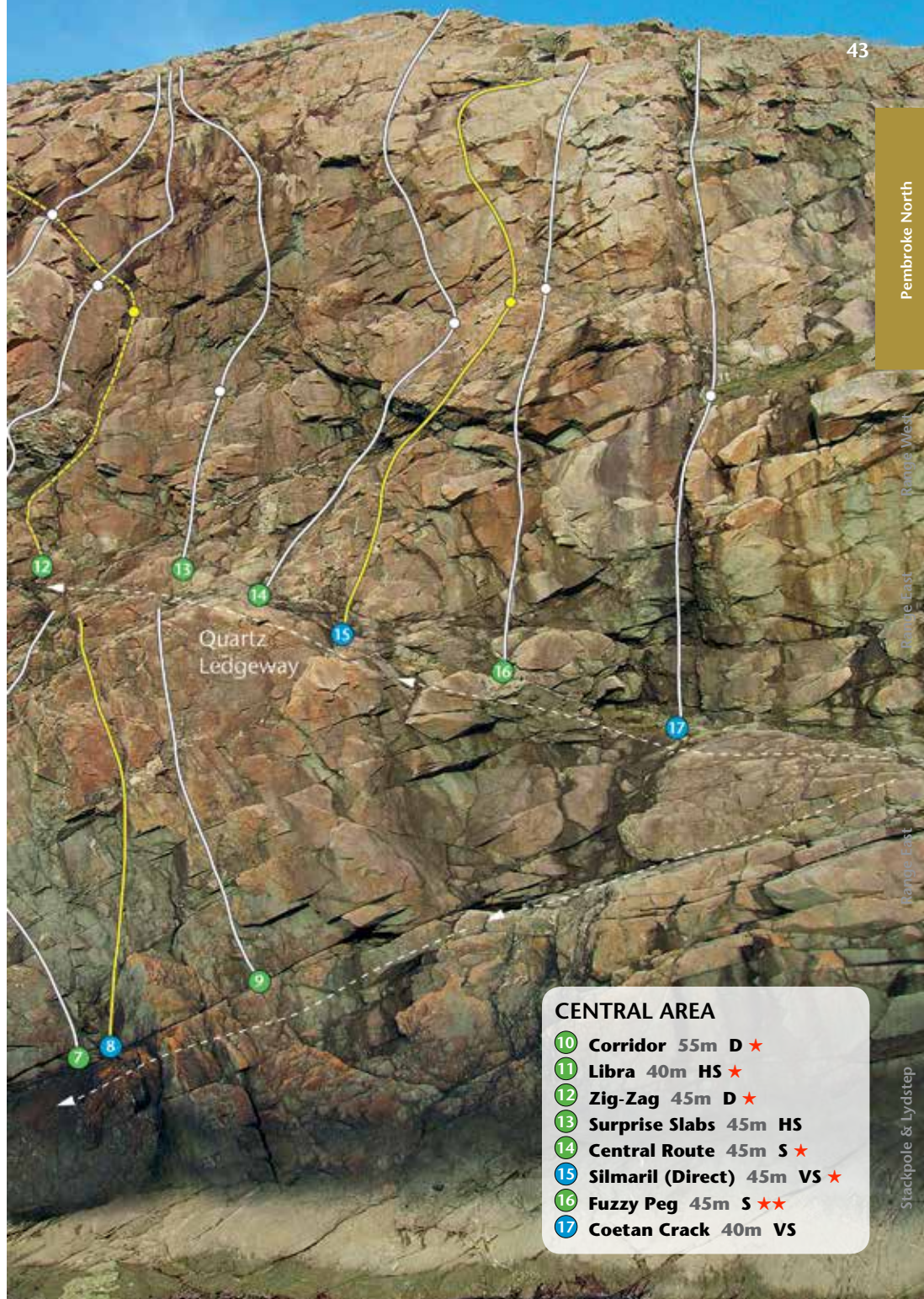
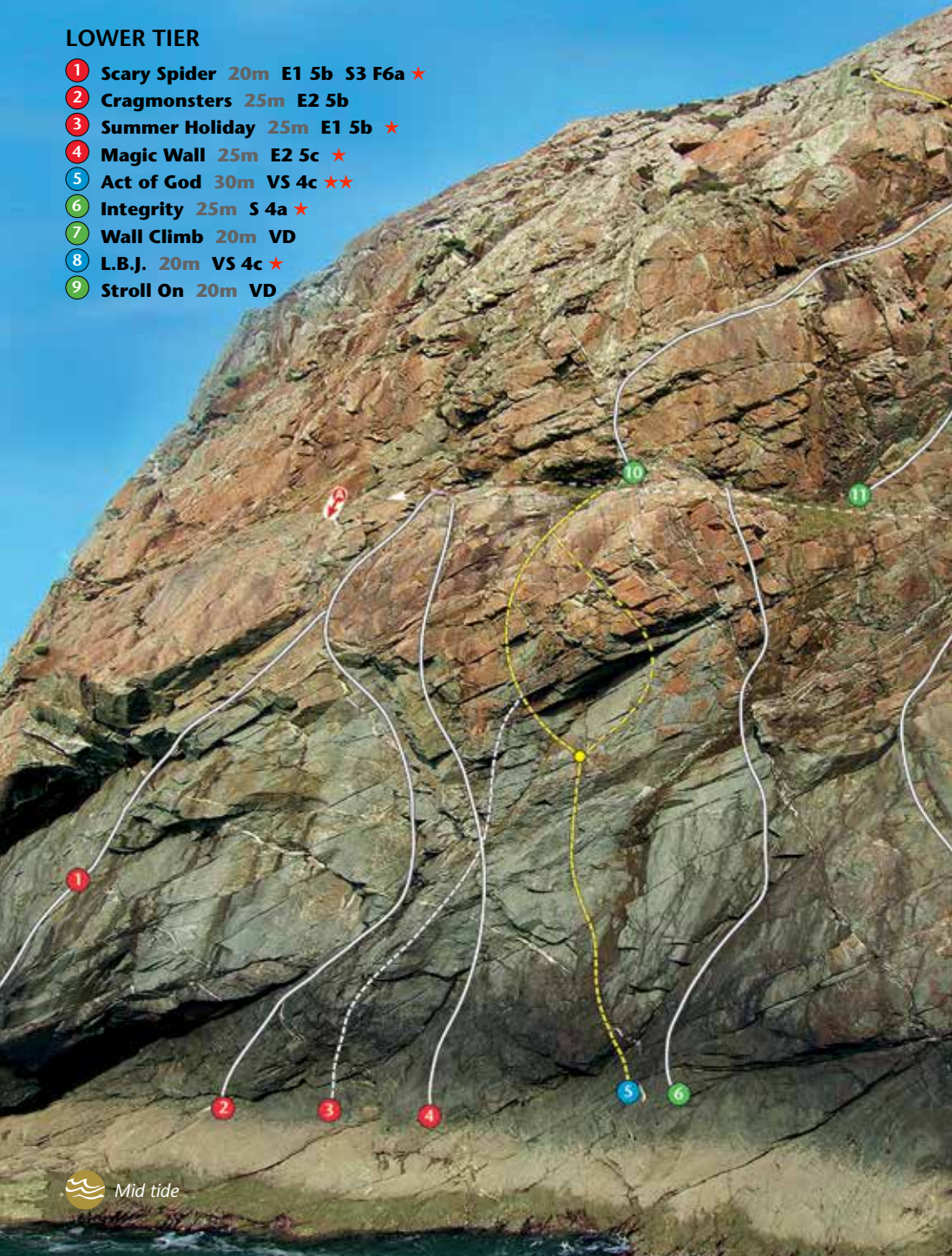
All of the routes here start from the 'Quartz Ledgeway' which finishes at a grassy ledge at the left end of the crag above *Act of God*. *Coetan Crack* (often wet) is a useful landmark. The first route starts from the grassy ledge.

- 10 **Corridor 55m D** ★
1 30m Climb the short wall to gain a prominent ramp trending rightwards. Follow this to the junction with the groove of *Zig-Zag*.
2 25m Follow the upper of two cracklines leading diagonally rightwards onto the broken slabs at the top of the cliff.
C Mortlock, B Webb 1967
- 11 **Libra 40m HS** ★
1 20m 4b Climb a steep flake-line up the short wall above the start of *Zig-Zag*. Traverse right and step up to gain a thin flake which is followed to the same belay.
2 20m 4a Move up rightwards to follow a thin crackline, finishing on broken ground.
K Hodge, D Gadsby 29.6.69; Start as described
M Harber, J Williams, P Massey 12.4.81
- 12 **Zig-Zag 45m D** ★
A very pleasant outing taking the obvious line of weakness.
1 20m Climb the groove diagonally rightwards to the slab apex.
2 25m Follow the groove-line diagonally leftwards to the top.
C Mortlock 1967
- 13 **Surprise Slabs 45m HS** ★
Start 10 metres right of *Zig-Zag*
1 15m A short wall and slabs lead to broken ledges.
2 20m 4a Pull rightwards over a bulge, surmounting an overlap to gain a slab beneath a bulging wall. Move up left over another overlap to reach a thin groove. Follow this, and slabs above (poorly protected), past the left-hand side of the upper overhangs.
C Mortlock, B Webb 1967
- 14 **Central Route 45m S** ★
1 20m 4a Climb easily to a ledge beneath the left-hand side of the prominent overhang. Pull through steeply rightwards on a quartz band to gain a slab and ledge above.
2 25m 4a Climb up to the junction between the two upper overhangs and follow easier slabs above.
C Mortlock, B Webb 1967
- 15 **Silmaril (Direct) 45m VS** ★
1 20m 4a Start just above and left of a step in the quartz ledgeway. Climb directly to the centre of the prominent overhang, pulling over it into a tiny break. Continue to a ledge.
2 25m 4c Climb the wall above the belay (the original line avoided this on the right at 4a) and surmount the tricky overhang on the left to gain a slab and an easier finish.
B Webb, B Webb 1967; direct variation S Quinton, C Price 27.4.08
- 16 **Fuzzy Peg 45m S** ★★
The best line hereabouts, with a pleasant finishing groove.
1 25m Start 5 metres left of *Coetan Crack* and climb straight up via a niche to an overhang. Step up left, going through a break in the overhang, and continue to a ledge.
2 20m 4a Step right to a thin groove-line, going over a bulge to a blocky overhang. Finish up the better-defined groove, past the right-hand side of the overhang.
R Nicholas, B Sanderson, W Bradshaw 4.6.8
- 17 **Coetan Crack 40m VS** ★
The prominent crack, 15 metres left of *Coetan Gully*, which can suffer from seepage.
1 10m 4c Climb the crack direct to a large grass ledge (peg belay).
2 30m Climb the continuation crackline.
C Mortlock, B Webb 1967

See Topo and Key Next Page

LOWER TIER

- 1 Scary Spider 20m E1 5b S3 F6a ★
- 2 Cragmonsters 25m E2 5b
- 3 Summer Holiday 25m E1 5b ★
- 4 Magic Wall 25m E2 5c ★
- 5 Act of God 30m VS 4c ★★
- 6 Integrity 25m S 4a ★
- 7 Wall Climb 20m VD
- 8 L.B.J. 20m VS 4c ★
- 9 Stroll On 20m VD



- CENTRAL AREA**
- 10 Corridor 55m D ★
 - 11 Libra 40m HS ★
 - 12 Zig-Zag 45m D ★
 - 13 Surprise Slabs 45m HS
 - 14 Central Route 45m S ★
 - 15 Silmaril (Direct) 45m VS ★
 - 16 Fuzzy Peg 45m S ★★
 - 17 Coetan Crack 40m VS

Pembroke North

Ramp West

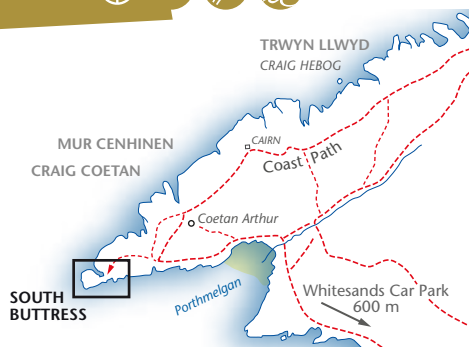
Ramp East

Ramp East

Stackpole & Lydstep

SOUTH BUTTRESS

OS Grid Ref: 721 278
SOUTH FACING

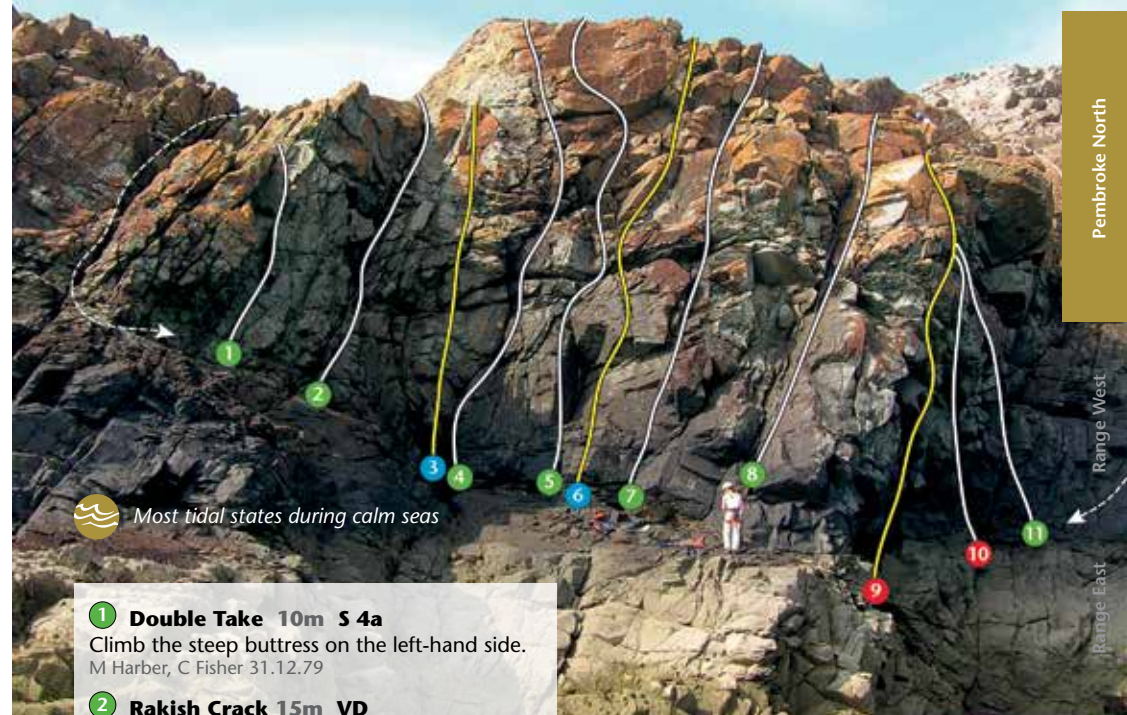


This is a great place to hang out with a few friends on a balmy summer's day – and unusually for St David's Head, it faces south and is therefore a convenient place to start the day, while waiting for the sun to get around onto the other cliffs. It has a relaxed feel, some great viewing platforms, roomy belay ledges, and a few deep water solos. The routes are short and friendly and the rock is immaculate, with great friction. The belay ledges are affected by swell.

Approach: From Whitesands car park this crag is on the south side of the low promontory defining the tip of St David's Head – accessed by a short scramble down from plateau level to a pleasant rocky area above the climbs. For the first 9 routes, walk along the crest of the headland and scramble down a ramp, reached from a slight col on the promontory. For the remaining routes on the right, scramble down ledges from the pleasant rocky area. **Map p.27.**



Sarah Garnett on Step Up, S 4a MARK DAVIES



Most tidal states during calm seas

- 1 Double Take 10m S 4a**
Climb the steep buttress on the left-hand side.
M Harber, C Fisher 31.12.79
- 2 Rakish Crack 15m VD**
Starting just left of the gully, climb the rightward-slanting crackline.
J Jordan and party 7.69
- 3 Overhanging Buttress 15m HVS 5a ★**
Climb the overhanging buttress on good holds.
S Lewis, J Matthews 31.12.79
- 4 Central Crack 15m S 4a**
Climb the crack directly above the drainage gully, moving right around the overhang.
C Mortlock and party 7.69
- 5 Step-Up 15m S 4a ★**
Gain the crack and groove above the niche, pulling out left onto a red wall at the top.
M Harber, C Fisher 31.12.79
- 6 Pull-Up 15m VS 4c**
Climb over the overhang and finish more easily.
S Lewis, J Matthews 31.12.79
- 7 Crack-Up 15m VD**
Climb the rib to gain the crack above.
J Jordan and party 7.69
- 8 The Rake 15m D ★**
Ascend the narrow slab on the right.
C Mortlock and party 7.69

The following two routes are available as deep water solos at mid to high tide:

- 9 Yo-Yo 15m E2 5b S1 F6a+ ★**
Around to the right is a compact, leaning wall. Climb up the middle of it, stepping left underneath the roof to gain a ledge on the arête. Step back right onto the lip of the roof and continue up the groove above.
S Ponsford, T Luddington 2006
- 10 Funnybone 20m E2 5b S1 F6a+ ★**
Good climbing on excellent juggy rock. Start at high-tide level on the right side of the wall, below a diagonal quartz vein. Step left onto a ramp and follow it for a few metres. Go up rightwards through a bulge, which leads to an easier but steep wall.
J Roberts, N Francis, D Roberts 11.4.10
- 11 The Staircase 15m D ★**
Start from below the right side of the wall and climb up and left via ledges to finish up the left arête in a good position. (The direct finish up the corner is VD.)
S Lewis, J Matthews 31.12.79

Pembroke North

Range West

Range East

Range East

Stackpole & Lydstep

SOUTHERN BAYS

MAINLY SOUTH FACING
Rock Type: Mainly Sandstone

There is a plentiful array of small coves and inlets littering the coastline directly south of St David's and the south-facing exquisite sandstone crags dotted around this area provide an all-year-round destination for climbers.

Pembroke North

Range West

Range East

Range East

Stackpole & Lydstep